
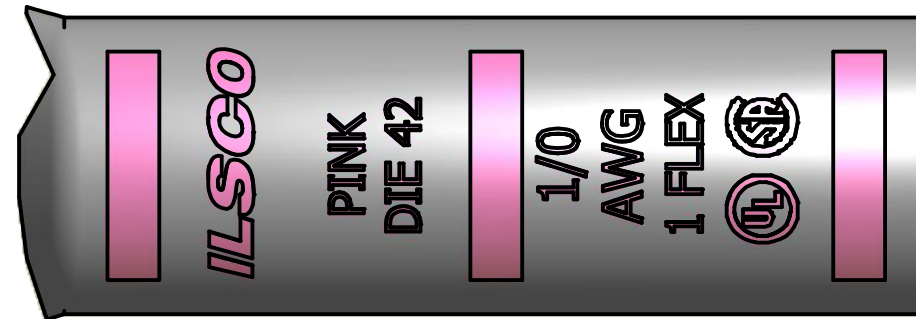
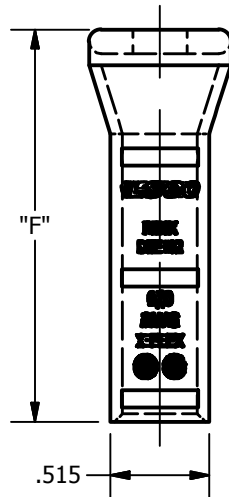
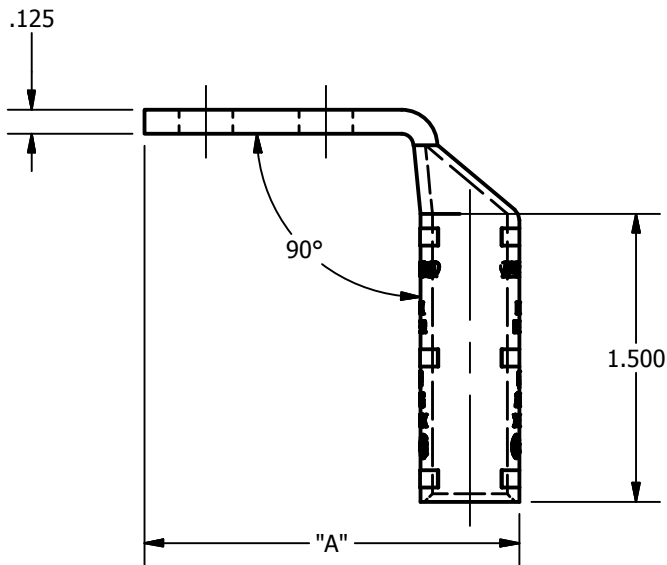
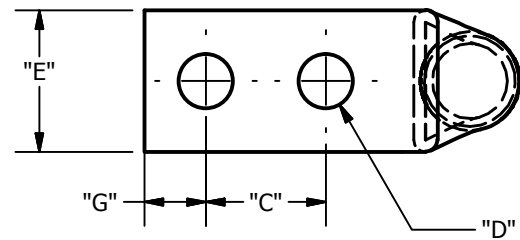


SCREW: NONE	MATERIAL: COPPER	REV: D	 800-776-9775 www.ilSCO.com
CAT. NO.: SEE CHART	PLATING: EL-TIN	DRAWN BY:DW	
INFORMATION SHEET:FORM 157	MARKING: SEE CHART	DATE:6/3/2008	
		SCALE: NTS	
		SIZE: B	
			DWG NO: Y0703-D-9
			SHEET: 1 OF 1



DETAIL E  
INK MARK TOP & BOTTOM

CATALOG NUMBER	"A"	"C"	"D"	"E"	"G"	TANG MARKING
CLNB-1/0-10-12-9	1.880	0.500	0.219	0.738	0.257	UL, ILSCO, CSA, CLNB-1/0-10-12-9, 10 x 1/2, 1/0 AWG, 1 FLEX, DIE 42
CLNB-1/0-10-58-9	1.880	0.625	0.219	0.738	0.257	UL, ILSCO, CSA, CLNB-1/0-10-58-9, 10 x 5/8, 1/0 AWG, 1 FLEX, DIE 42
CLNB-1/0-10-1116-9	1.880	0.687	0.219	0.738	0.257	UL, ILSCO, CSA, CLNB-1/0-10-1116-9, 10 x 11/16, 1/0 AWG, 1 FLEX, DIE 42
CLNB-1/0-10-34-9	2.067	0.750	0.219	0.738	0.257	UL, ILSCO, CSA, CLNB-1/0-10-34-9, 10 x 3/4, 1/0 AWG, 1 FLEX, DIE 42
CLNB-1/0-10-1-9	2.317	1.000	0.219	0.738	0.257	UL, ILSCO, CSA, CLNB-1/0-10-1-9, 10 x 1, 1/0 AWG, 1 FLEX, DIE 42
CLNB-1/0-14-12-9	1.880	0.500	0.281	0.738	0.320	UL, ILSCO, CSA, CLNB-1/0-14-12-9, 1/4 x 1/2, 1/0 AWG, 1 FLEX, DIE 42
CLNB-1/0-14-58-9	2.067	0.625	0.281	0.738	0.320	UL, ILSCO, CSA, CLNB-1/0-14-58-9, 1/4 x 5/8, 1/0 AWG, 1 FLEX, DIE 42
CLNB-1/0-14-34-9	2.067	0.750	0.281	0.738	0.320	UL, ILSCO, CSA, CLNB-1/0-14-34-9, 1/4 x 3/4, 1/0 AWG, 1 FLEX, DIE 42
CLNB-1/0-14-1-9	2.317	1.000	0.281	0.738	0.320	UL, ILSCO, CSA, CLNB-1/0-14-1-9, 1/4 x 1, 1/0 AWG, 1 FLEX, DIE 42
CLNB-1/0-516-58-9	2.067	0.625	0.343	0.738	0.351	UL, ILSCO, CSA, CLNB-1/0-516-58-9, 5/16 x 5/8, 1/0 AWG, 1 FLEX, DIE 42
CLNB-1/0-516-34-9	2.317	0.750	0.343	0.738	0.351	UL, ILSCO, CSA, CLNB-1/0-516-34-9, 5/16 x 3/4, 1/0 AWG, 1 FLEX, DIE 42
CLNB-1/0-516-78-9	2.317	0.875	0.343	0.738	0.351	UL, ILSCO, CSA, CLNB-1/0-516-78-9, 5/16 x 7/8, 1/0 AWG, 1 FLEX, DIE 42
CLNB-1/0-516-1-9	2.567	1.000	0.343	0.738	0.351	UL, ILSCO, CSA, CLNB-1/0-516-1-9, 5/16 x 1, 1/0 AWG, 1 FLEX, DIE 42
CLNB-1/0-516-134-9	3.130	1.750	0.343	0.738	0.351	UL, ILSCO, CSA, CLNB-1/0-516-134-9, 5/16 x 1-3/4, 1/0 AWG, 1 FLEX, DIE 42
CLNB-1/0-38-34-9	2.317	0.750	0.406	0.738	0.414	UL, ILSCO, CSA, CLNB-1/0-38-34-9, 3/8 x 3/4, 1/0 AWG, 1 FLEX, DIE 42
CLNB-1/0-38-78-9	2.567	0.875	0.406	0.738	0.414	UL, ILSCO, CSA, CLNB-1/0-38-78-9, 3/8 x 7/8, 1/0 AWG, 1 FLEX, DIE 42
CLNB-1/0-38-1-9	2.567	1.000	0.406	0.738	0.414	UL, ILSCO, CSA, CLNB-1/0-38-1-9, 3/8 x 1, 1/0 AWG, 1 FLEX, DIE 42
CLNB-1/0-38-116-9	2.567	1.062	0.406	0.738	0.414	UL, ILSCO, CSA, CLNB-1/0-38-116-9, 3/8 x 1-1/6, 1/0 AWG, 1 FLEX, DIE 42
CLNB-1/0-38-118-9	2.755	1.125	0.406	0.738	0.414	UL, ILSCO, CSA, CLNB-1/0-38-118-9, 3/8 x 1-1/8, 1/0 AWG, 1 FLEX, DIE 42
CLNB-1/0-38-134-9	3.254	1.750	0.406	0.738	0.414	UL, ILSCO, CSA, CLNB-1/0-38-134-9, 3/8 x 1-3/4, 1/0 AWG, 1 FLEX, DIE 42
CLNB-1/0-38-2-9	3.630	2.000	0.406	0.738	0.414	UL, ILSCO, CSA, CLNB-1/0-38-2-9, 3/8 x 2, 1/0 AWG, 1 FLEX, DIE 42
CLNB-1/0-12-1-9	2.755	1.000	0.562	0.738	0.546	UL, ILSCO, CSA, CLNB-1/0-12-1-9, 1/2 x 1, 1/0 AWG, 1 FLEX, DIE 42
CLNB-1/0-12-114-9	3.130	1.250	0.562	0.738	0.546	UL, ILSCO, CSA, CLNB-1/0-12-114-9, 1/2 x 1-1/4, 1/0 AWG, 1 FLEX, DIE 42
CLNB-1/0-12-112-9	3.254	1.500	0.562	0.738	0.546	UL, ILSCO, CSA, CLNB-1/0-12-112-9, 1/2 x 1-1/2, 1/0 AWG, 1 FLEX, DIE 42
CLNB-1/0-12-134-9	3.630	1.750	0.562	0.738	0.546	UL, ILSCO, CSA, CLNB-1/0-12-134-9, 1/2 x 1-3/4, 1/0 AWG, 1 FLEX, DIE 42
CLNB-1/0-12-178-9	3.630	1.875	0.562	0.738	0.546	UL, ILSCO, CSA, CLNB-1/0-12-178-9, 1/2 x 1-7/8, 1/0 AWG, 1 FLEX, DIE 42